

Progetto scuola 21 - **ECOVALORIZZIAMO**

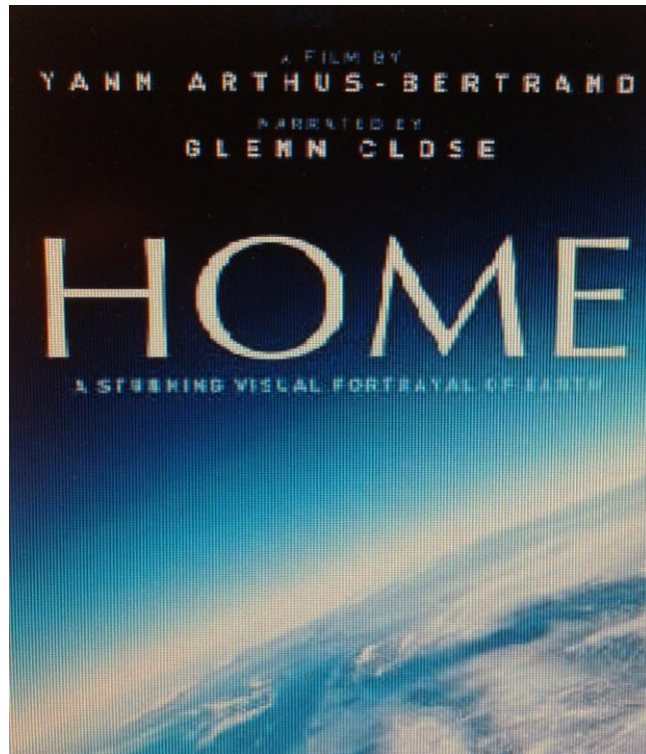
SETTORE: Operatore del legno – Operatore delle lavorazioni artistiche –
Addetto alla realizzazione e decorazione di oggetti

Materia: **INGLESE**
Docente: **CLARA BENEDETTI**

RACCOLTA DEI DATI ESSENZIALI

CONTENUTI DELLA TERZA FASE

Si esplorano i significati e i contenuti di letture e di documentari come Home 2009 in lingua inglese.



Home narrates the evolution of the Earth, nature, agriculture, humans, the crises of habitat destruction, energy depletion, climate disruption, degradation of the environment, health, economic disparity.

Home Documentary

HOME 2009

- THE EARTH CANNOT KEEP UP
LA TERRA NON PUÒ RESISTERE.
- THE FORESTS PROVIDE THE HUMIDITY THAT IS NECESSARY FOR LIFE
FORNISCONO LE FORESTE L'UMIDITÀ CHE È NECESSARIA PER LA VITA.
- POLLUTION IS CATASTROPHIC
L'INQUINAMENTO È CATASTROFICO.
- THE ATMOSPHERE IS HEATING UP.
L'ATMOSFERA SI STA RISCALDANDO
- OUR ECOSYSTEM DOESN'T HAVE BORDERS
IL NOSTRO ECOSISTEMA NON HA CONFINI
- WHEREVER WE ARE, OUR ACTIONS HAVE REPERCUSSIONS ON THE WHOLE EARTH.
OVUNQUE NOI SIAMO, LE NOSTRE AZIONI HANNO RIPERCUSSIONI SU TUTTA LA TERRA.

Environment

HOME 2009

CLOUDS = NUVOLE
RIVERS = Fiume
SEAS = MARI
LAKES = LAGHI
OXYGEN = OSSIGENO
ATMOSPHERE = ATMOSFERA
ENERGY = ENERGIA
TREES = ALBERI
LIVING MATTER = MATERIA VIVENTE
SOILS = TERRENO
ORGANISMS = ORGANISMI
CIVILIZATION = CIVILIZZAZIONE
HUMANITY = UMANITÀ
SUNLIGHT = SOLE
SUN = SOLE
PROGRESS = PROGRESSO
CYCLE OF LIFE = CICLO DI VITA
CONSUMPTION = CONSUMO
URBANIZATION = URBANIZZAZIONE
EARTH = TERRA
SPECIES = SPECIE
WORLD = MONDO
CLIMATE = CLIMA
PLANET = PIANETA
POPULATION = POPOLAZIONE
ANIMALS = ANIMALI
INVENTION = INVENZIONE
AGRICULTURE = AGRICOLTURA

Environment

My impressions on the site ecologist,

I saw on the site a very information itself (utili), the word goes into decline,

The human brought in decline the nature, he built fabbrica, ~~car~~, all buildings that have destroyed nature. The water is ending, the human at logging ~~is~~ big part of the ~~word~~ word.

All this can turn ~~in~~ ~~versus~~ we end, we don't know the ~~suocidera~~.

Nature in decline

BIO ARCHITECTURE = BIOARCHITETTURA

LA BIOARCHITETTURA È L'ART E IL BUILDING WITH ^{CARE} SPACE, SUPPORT AND ANIMATE ELEMENTS, LIFE AND LIVING SYSTEM.

ENVIRONMENTAL = AMBIENTALE

SOCIAL = SOCIALE

THE AESTHETIC = ESTETICO

ORGANIC = ORGANICO

LIVING SYSTEM = SISTEMA VIVENTE

GREEN TECHNOLOGY = TECNOLOGIA VERDE

BIOARCHITETTURA INTEGRATES NATURAL FORM, BIOLOGIC FUNCTION AND ENVIRONMENTAL, SOCIAL AND AESTHETIC CONSIDERATION. IT REQUIRES KNOWLEDGE OF LIVING SYSTEM, NATURAL HABIT AND GEOMETRIC RELATIONSHIP.

EDEN PROJECT. 2010

AS WELL AS CREATING CITY

EDEN PROJECT UNFORGETTABLE LEARNING EXPERIENCE FOR CITY. EDEN PROJECT DOES ~~DOING~~ VALUABLE RESEARCH INTO PLANTS AND CONSERVATION.

MAKING SURE WE RUN

EDEN PROJECT RUNS OPERATIONS IN THE GREENEST POSSIBLE

- PLANTS GIVE US OUR FOOD, FUEL MATERIALS AND MEDICINE
- PLANTS ARE PART OF A WIDER ECOSYSTEM THAT PROVIDES OUR WATER AND AIR.

FOOD = ALIMENTO

FUEL = CARBURANTE

MEDICINE = MEDICINA

WIDER ECOSYSTEM = ECOSISTEMA PIÙ AMPIO

PROVIDE = FORNIRE

Bioarchitecture